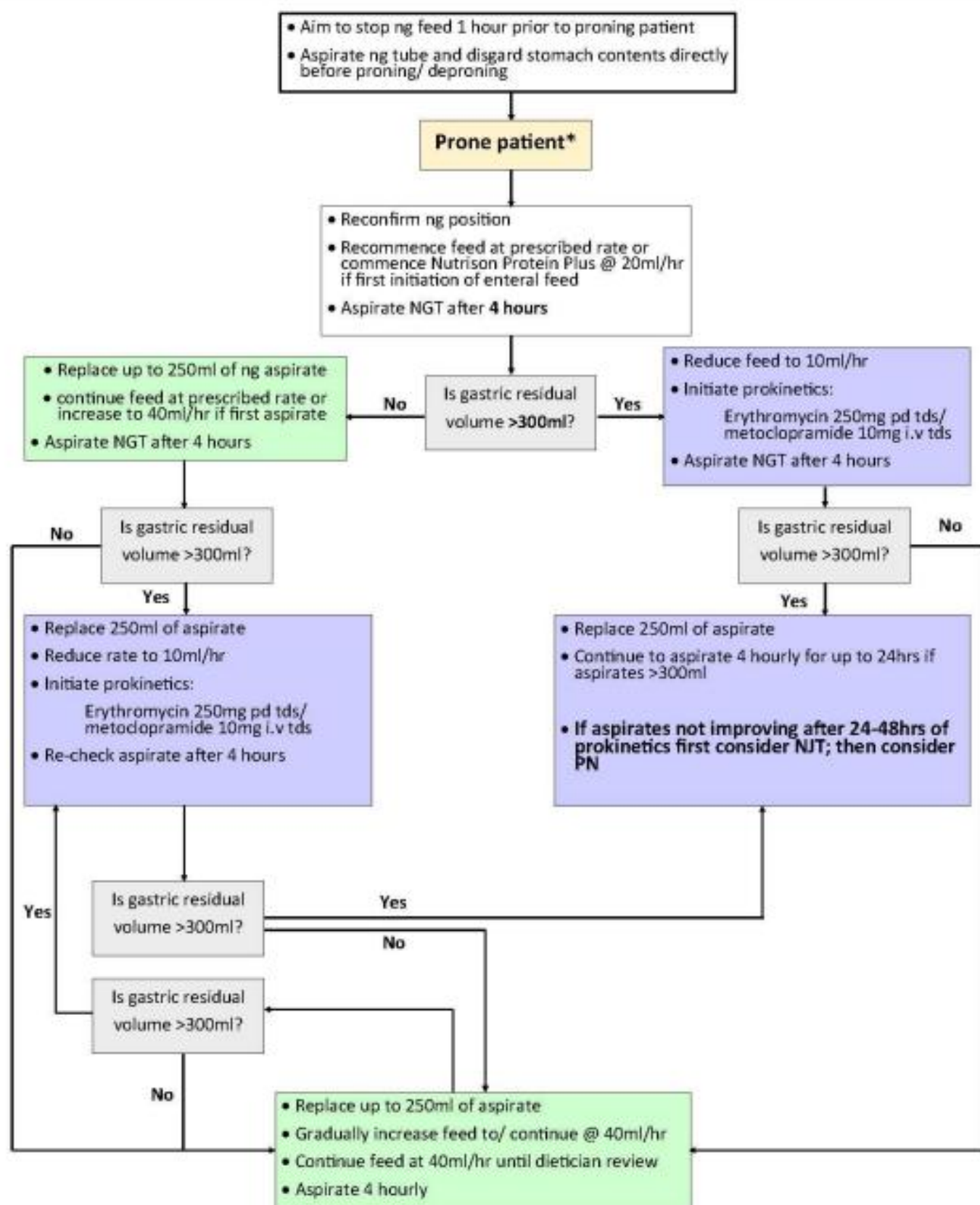


Worcestershire Acute Hospitals NHS Trust—Adult Critical Care Nutrition Pathway

- Proned Patient



• * Patients should be proned in accordance with Trust guidance.
- NG length should be noted and confirmed secure immediately prior to and after proning/ deproning
- Consider prokinetics if GRV > 250ml
NOTE: From 10ml/hr feed should be gradually increased to 20ml and then 40ml/hr at 4hourly intervals