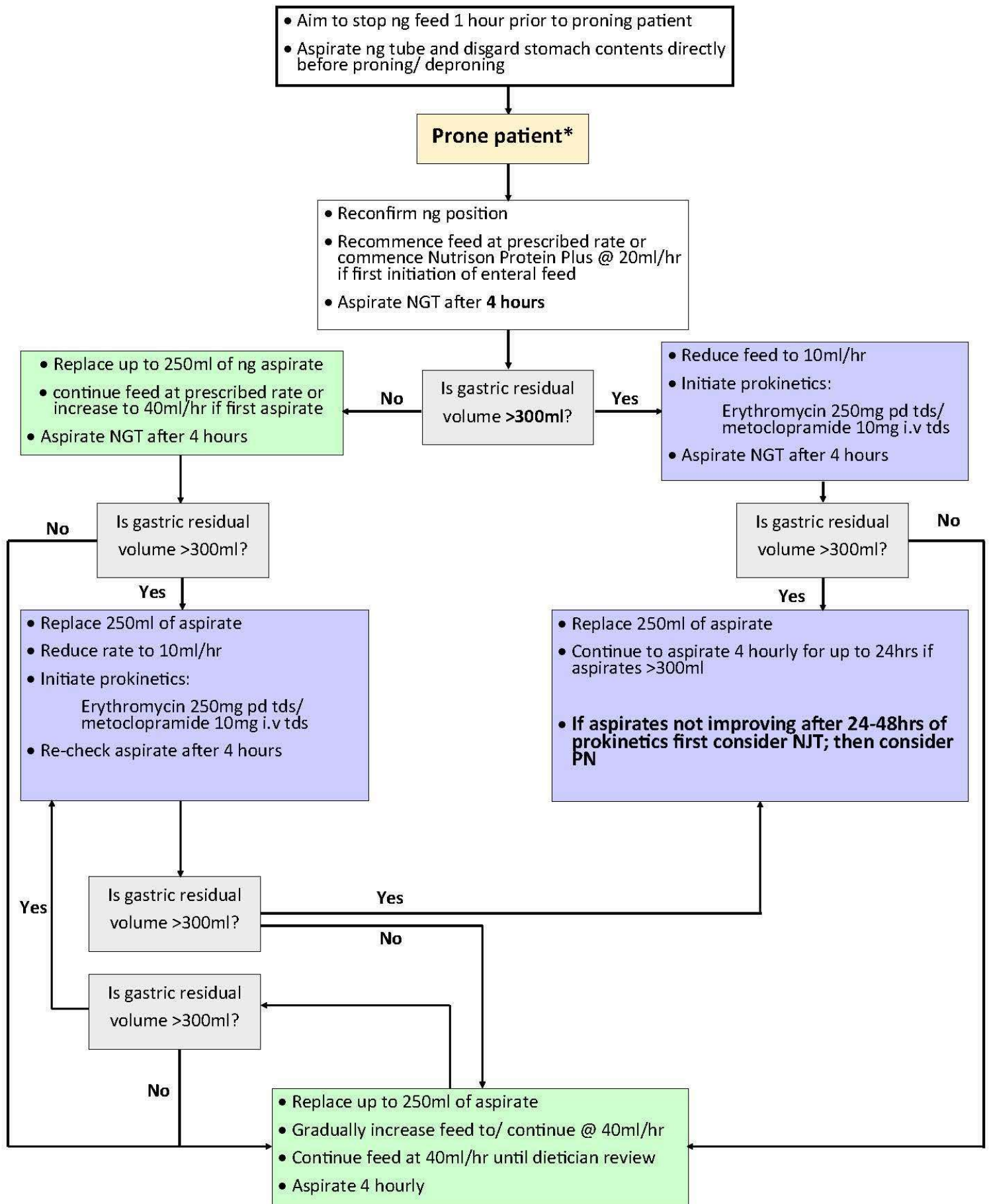


# Worcestershire Acute Hospitals NHS Trust—Adult Critical Care Nutrition Pathway

## - Proned Patient



• \* Patients should be proned in accordance with Trust guidance.

- NG length should be noted and confirmed secure immediately prior to and after proning/ deproning

- Consider prokinetics if GRV > 250ml

**NOTE: From 10ml/hr feed should be gradually increased to 20ml and then 40ml/hr at 4hourly intervals**